



i.life puts the soul into this impressive home

Installer: i.life www.i.lifesolutions.co.uk

Name of project: Yorkshire Mansion

Project details: A whole house entertainment, automation and lighting scheme

High-class installer i.life delivered a stunning project in this 20,000 ft² new build project mixing attractive, atmospheric lighting with video and music distribution

i.life has been in business since 1996 and produces some of the most visually stunning projects around. The company is very proud of its ability to listen to a client's needs and build a genuinely bespoke solution.

This particular project, a major undertaking which lasted a total of four years, came about due to the relationship i.life has with the developer and interior designers on the project which had worked with i.life before.

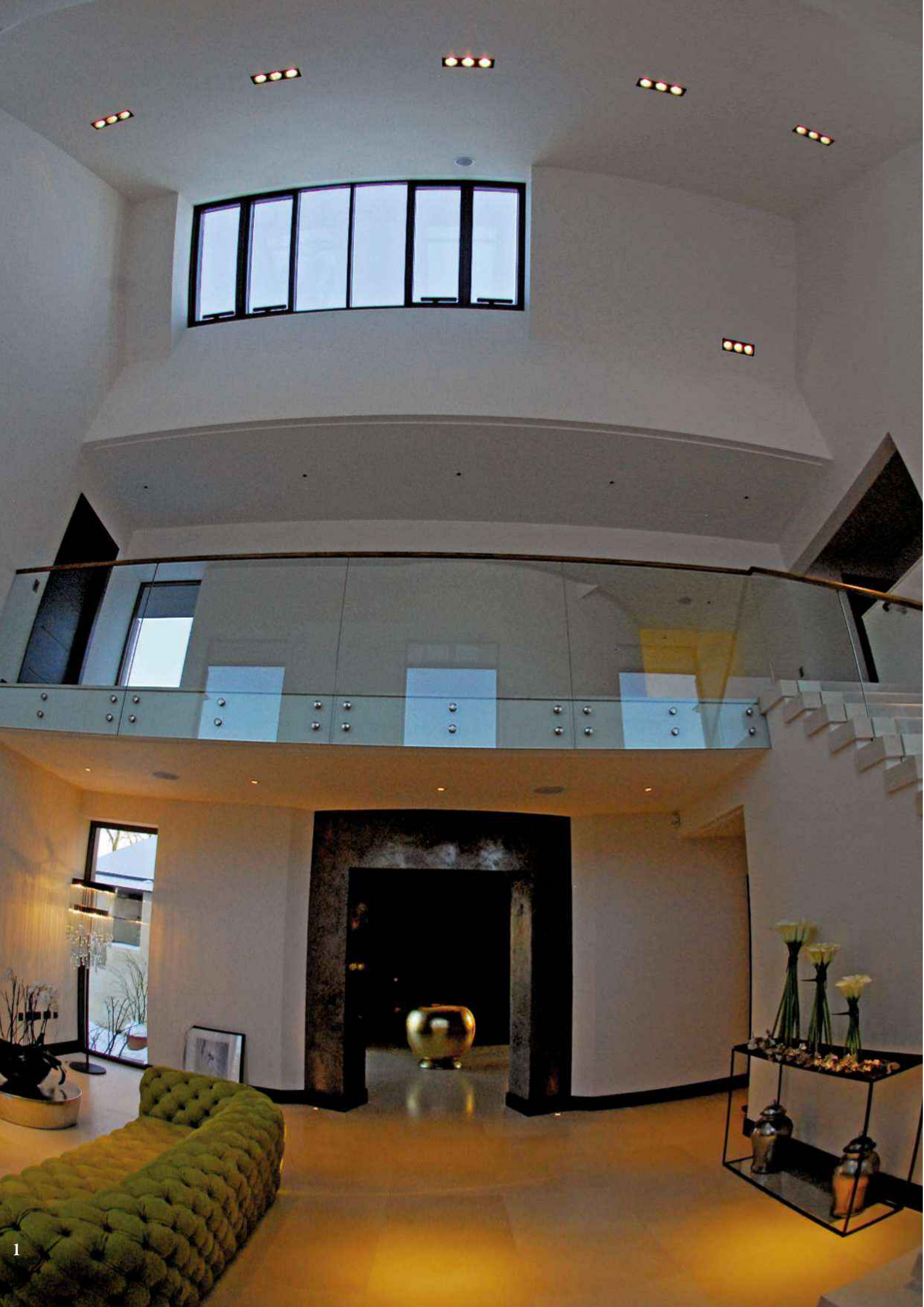
Daryl Binelli, marketing manager, for i.life says: "The client on this job was not that familiar with the types of technology we were looking to employ, but was not a technophobe either, he and his family simply wanted an easy to use solution of high quality and one that was future

proofed for coming technology advancements."

Daryl adds: "It was also very important that the technology fitted well with the interior design scheme, the family did not want too many control panels covering the walls. As well as a major lighting scheme, the family wanted a video and audio delivery system including a party mode.

"We came up with a particular solution for this last request and the family can select which rooms they want to include when the party mode is on by selecting from a map on the control interface."

iTunes, iPods and Apple TVs drive lots of the content around the home, various discretely and strategically placed iPod docks like in the children's playroom and bedrooms give



the family quick and easy access to their music.

The family and the install team are particular fans of Apple TV (which delivers TV, film, Internet and music content to and around the home) citing the ease of use and install as major plus points. Sky TV is also distributed around the home, DVD playback is included in the living room, many of the rooms feature large-screen TVs and there are plans for a dedicated cinema room to be added in the near future.

The back-bone for the intelligence and control delivered by this install is provided by a platform called AMX. Manufactured to the highest standards, AMX is one of the most successful and sort after automation systems in the world.

Harmeet Soar, project manager, for i.life says: “The client particularly likes the bespoke AXM interface (from where all the control and entertainment systems are accessed) which fits their needs exactly and works seamlessly and easily no matter which member of the family is using it, from grandparents to grandchildren.

“The family also loves the way we have linked the Apple TVs and their iTunes into the system. It is an inexpensive solution and gives the family access to a system they are already familiar with. Most of our interfaces work on a watch-listen-where? principle, where the user

simply chooses what they want to do and where they want to do it, job done.”

i.life makes light work of it

As well as the entertainment built into this home, the property also enjoys a sophisticated lighting system delivered by i.life, lighting automation manufacturer Lutron and lighting design specialists Bruce Munro. Andrew Johnston, lighting designer at Bruce Munro explains: “Our brief was to light the home and gardens in such a way that it showed all areas off to their best. Whatever the space was being used for at the time, the lighting needed to be discreet and low maintenance. In addition, we had to be highly creative in terms of the placement and choice of fixtures, to accommodate the steel clad structure and many angles within each space.”

Using Lutron’s ‘HomeWorks’ light control solution, ease-of-use was built into the lighting scheme from day one and the install team was able to create a wide range of scenes to suit any mood, which could be operated via custom specified Lutron SeeTouch keypads in every room and two hand-held AMX touch panels. In addition, each of the Lutron SeeTouch keypads has been programmed to give family members varying levels of control, as required. A simple ‘on/off’ control has been





3



4

programmed into the top button of each keypad, buttons two and three provide pre-specified mood lighting in that zone and button four always turns the lights on or off in the zone which is about to be entered.

Andrew Johnston explains: “A good lighting scheme is as much about the shadow as the light. All the warmth and ambience within this design came from the mix of table, wall lamps and shade and light control, as well as the light sculptures that we introduced to tap into the human emotional response from those using the home on a daily basis.”

Due to the large amounts of natural light flooding the home, the Lutron system also delivers control of curtains and shades control to ensure that all light levels within the public spaces could be

altered as required. Alongside automated blinds and curtains throughout the dining, kitchen, games and living areas, the family room has blinds that drop at a 45° angle down the side of the glass roof.

A complex project this one, but one that has delivered exactly what the home owner was after, the family says: “The touch panel control across the house has made the control and use of the technology simple and intuitive. With carefully designed touch screens, which have a different interface for each room, it makes the high-quality audio and video that is distributed throughout the house seem even more sophisticated. We are very happy with the system that has been installed and the high quality of workmanship and professionalism from i.life Solutions.”



1. Mixing natural and artificial light makes a stunning impact in this large property
2. The lighting within the pool area is a great example of the thought that has been put into this home, there are even fibre optics at the bottom of the pool!
3. This cunningly designed bar area has attractive lighting and also an iPod dock to keep the party going
4. This games room has its own large screen TV and in-ceiling speakers
5. The family love the simplicity of the bespoke AMX interface



5